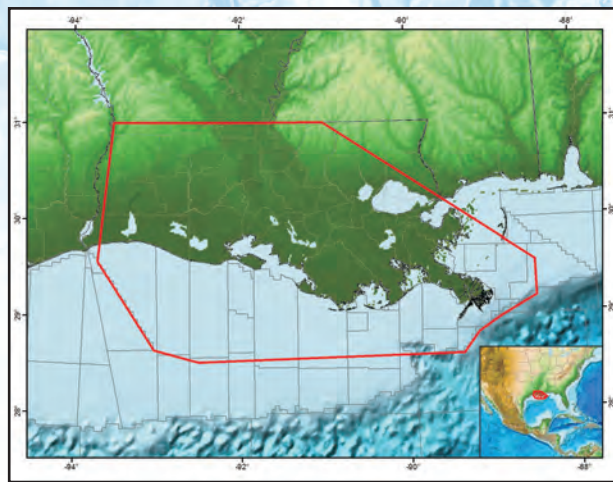
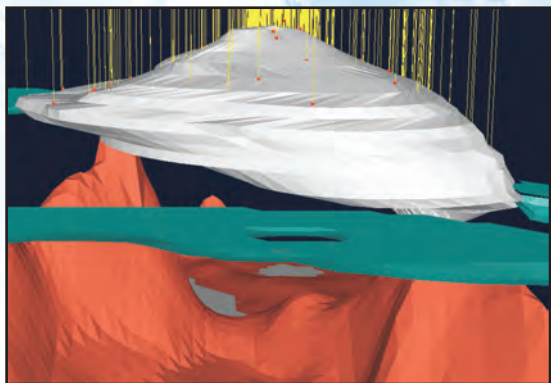


# SaltWorks

## 3D Salt Interpretation Package

### Louisiana



SaltWorks prime objective is the Louisiana salt tectonics, specifically the inter-salt sediment interpretation. Salt tectonics influences many aspects of petroleum systems; reservoir distribution, trapping mechanisms and source rock maturity. To explore successfully in Louisiana, you must understand the geometry and history of the salt.

IGC has gathered an abundance of data from various sources to constrain the 3D gravity inversion interpretation. Data coverage for the area shown is 250,000 stations from the Getech land & water bottom gravity database and 6,200 line miles of CGG aeromagnetic data. The interpretation is constrained by 6,600 well salt tops, control on over 193 salt domes, well density logs, well sonic velocities and regional magnetic basement structure.

SaltWorks functionality is its immediate interactive interface with a Client's proprietary database via a set of digital template-inspired interpretation maps. The Client can choose from several output format options.

Input data and a corresponding set of data enhancement maps are also included. Clients receive credit for prior data licenses.

Single or multiple dome studies are also available for license.

#### Salt Interpretation

- Top Allochthonous Salt
- Base Allochthonous Salt
- Allochthonous Salt Isopach
- Top Autochthonous Salt
- Autochthonous Salt Isopach
- Inter-Salt Sediment Isopach

#### Crustal Interpretation

- Three Crustal Maps for thermal and stratigraphy models:
  - Depth to Moho surface (depth to crust/mantle boundary) with refraction control.
  - Total Crust Isopach (magnetic basement to Moho)
  - Gravity Effect of Total Crust and Mantle
  - Regional Magnetic Basement Structure

#### Gravity Data

- Bouguer Gravity
- Isostatic Residual Gravity
- 1st order Bouguer Residual Gravity

#### Output Format

- Digital Archive, VIDL or ArcGIS Library



[www.igcworld.com](http://www.igcworld.com)

