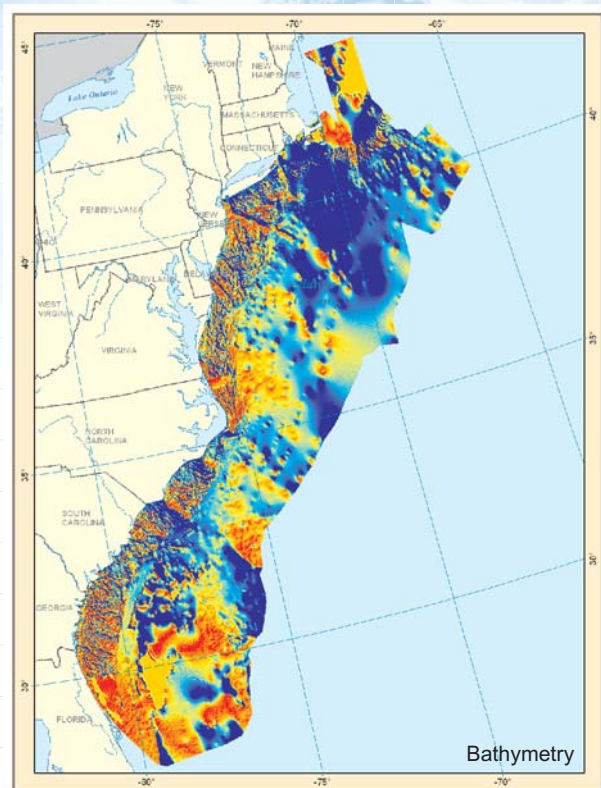


# ShelfWorks

## East Coast US Interpretation Package



### Objectives:

The ShelfWorks package for the US East Coast covers over 315,000 square miles. It is a regional geologic structure and lineaments interpretation derived from geophysical (gravity and magnetics) and geological data. The primary data sets included in the interpretation package are from the public-domain satellite-derived free-air gravity data and over 127,000 line miles of aeromagnetic data acquired by LKB and Aero from 1966 through 1978. Additional interpretation products are a depth to magnetic basement structure map derived quantitatively utilizing various depth estimation techniques, sediment isopach, and crustal maps.

### Deliverables:

#### Structural Framework

- Regional Features (lineaments, faults, anticlinal and synclinal elements)
- Magnetic Basement Structure Map - commonly defined as the upper surface of magnetized igneous terrane, often both mafic and felsic bodies.
- Sediment Isopach (bathymetry to basement structure)

#### Crustal Interpretation

- Three Crustal Maps for thermal and stratigraphy models:
  - Depth to Moho surface (depth to crust/mantle boundary) with refraction control.
  - Total Crust Isopach (magnetic basement to Moho)
  - Gravity Effect of Total Crust and Mantle

#### Magnetic Data

- Total Magnetic Intensity Field
- Reduction-to-Magnetic Pole (RTP)
- Targeted Data Enhancement maps (2)

#### Gravity Residuals

- Bouguer Gravity
- Isostatic Residual Gravity
- Targeted Data Enhancement maps (2)

#### ShelfWorks Report

An interpretation report includes the data source description, data processing, and interpretation methodology, a summary of the regional geology (with references), interpretation results and conclusions.

#### Output Formats

- PDF Report Portfolio including map deliverables
- Digital Archive, VIDL or ArcGIS Library, etc.



[www.igcworld.com](http://www.igcworld.com)